

MEETING ROOM

CAPACITY

Lobby Level	Sq. Ft.	Sq. Meters	Dimensions (Feet)	Banquet Rounds of 10	Reception	Conference	Classroom	U-Shape	Theater	Hollow Square	Exhibit 8x10 vert.
The Ritz-Carlton Ballroom	15,696	1,458	181x89x16	1,060	1,650	—	1,100	—	1,750	—	95
Salons I, II, V or VI	1,936	180	46x45x16	120	200	—	132	42	215	54	—
Salons III or IV	3,978	370	45x89x16	240	400	—	265	75	400	—	—
Pre-Function	4,362	405	—	—	—	—	—	—	—	—	—
Plaza Ballroom	6,055	563	65x92x14	400	635	—	350	78	580	—	30
Plaza I or III	2,005	186	65x31x14	120	210	—	120	39	180	60	—
Plaza II	2,045	190	65x31x14	120	215	—	120	39	180	60	—
Pre-Function	2,333	217	—	—	—	—	—	—	—	—	—
Tuscany Ballroom	13,485	1,253	87x155x21	960	1,400	—	900	—	1,500	—	77
Tuscany A, B or C	1,088	101	29x38x21	60	110	26	60	30	90	36	—
Tuscany D or E	3,480	323	87x40x21	200	350	—	230	—	350	—	—
Tuscany F, G or H	856	80	29x30x21	50	90	24	45	24	80	32	—
Pre-Function	4,250	395	—	—	—	—	—	—	—	—	—
Florence	360	33	15x24	20	25	12	12	—	30	—	—
Pisa	360	33	15x24	20	25	12	12	—	30	—	—

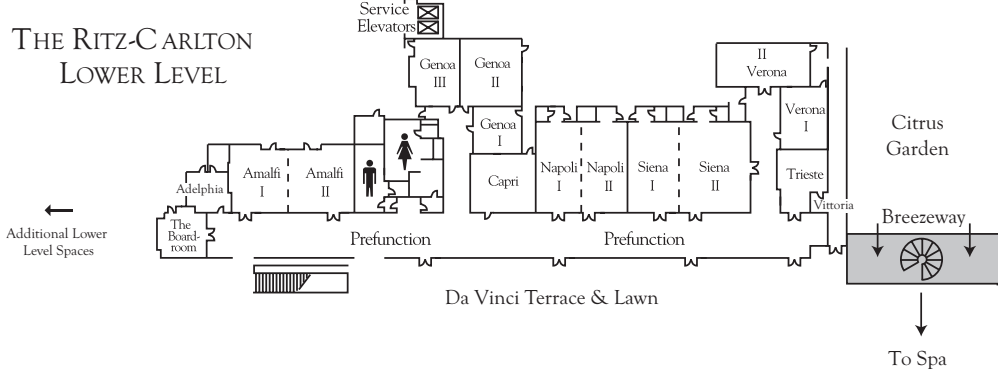
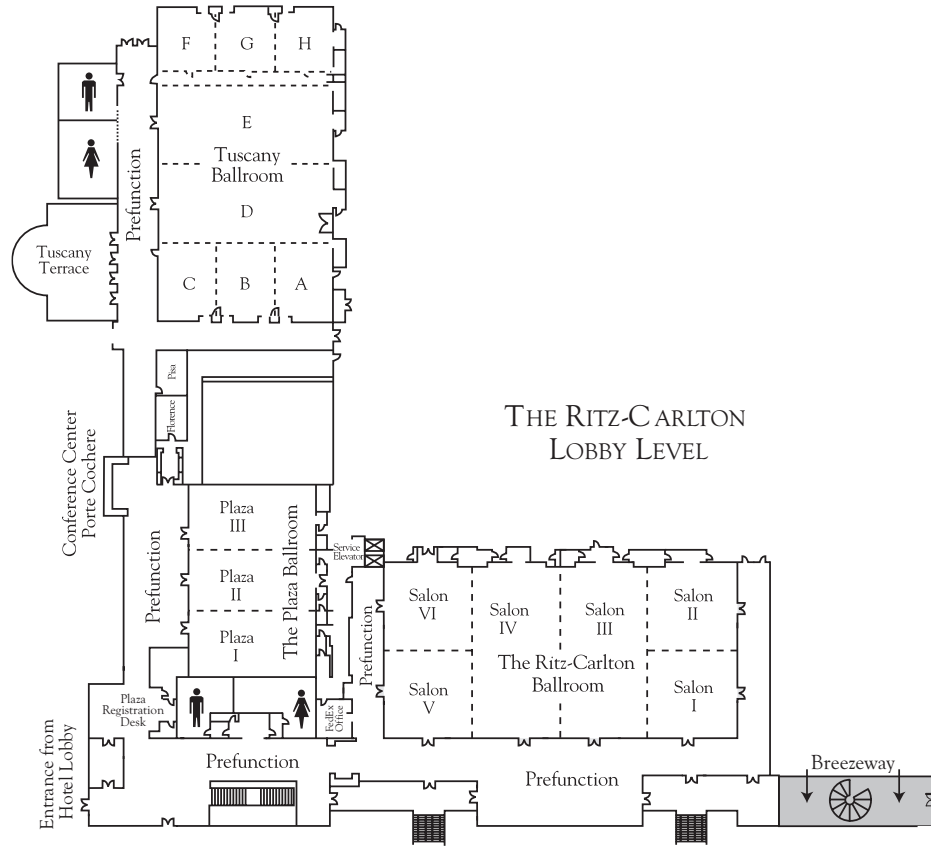
Lower Level	Sq. Ft.	Sq. Meters	Dimensions (Feet)	Banquet Rounds of 10	Reception	Conference	Classroom	U-Shape	Theater	Hollow Square	Exhibit 8x10 vert.
Adelphia	600	56	20x30x9	30	70	22	30	24	70	30	—
Amalfi I and II	1,793	167	63x29x9	110	185	40	110	44	150	52	—
Amalfi I	856	80	30x29x9	50	90	20	56	24	60	30	—
Amalfi II	937	87	32x29x9	50	95	20	56	24	60	30	—
Boardroom	468	43	23x20x9	—	—	12	—	—	—	—	—
Capri	856	80	31x27x9	50	90	24	45	27	80	32	—
Genoa I	479	45	21x23x9	20	50	18	18	18	40	24	—
Genoa II	995	92	31x32x9	50	100	24	50	27	80	36	—
Genoa III	718	67	21x32x9	40	80	20	30	24	70	30	—
Napoli I and II	1,846	171	43x43x9	120	190	36	84	48	200	60	—
Napoli I or II	923	86	22x43x9	50	95	30	42	32	80	30	—
Siena I and II	2,625	244	61x43x9	160	275	48	140	48	270	60	—
Siena I	1,050	98	24x43x9	60	110	26	60	30	100	36	—
Siena II	1,575	146	37x43x9	100	165	30	90	33	140	42	—
Trieste	482	45	24x20x9	20	50	12	20	15	30	18	—
Verona I	619	58	22x29x9	30	65	20	24	20	50	24	—
Verona II	915	85	45x21x9	40	95	30	42	30	50	36	—
Vittoria	136	13	8x17x9	—	—	6	—	—	—	—	—
Milan I	570	53	19x30x9	20	50	22	24	21	40	24	—
Milan II	840	78	24x35x9	50	80	22	45	24	84	30	—
Milan III	1,320	123	33x40x9	60	125	28	66	33	120	42	—

Lobby	Sq. Ft.	Sq. Meters	Dimensions (Feet)	Banquet Rounds of 10	Reception	Conference	Classroom	U-Shape	Theater	Hollow Square	Exhibit 8x10 vert.
Egret (not shown)	1,000	93	—	20	50	20	24	15	36	18	—
Heron (not shown)	1,000	93	—	20	50	20	24	15	36	18	—

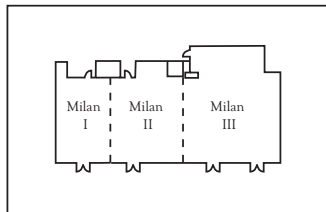
Outdoor Event Space	Sq. Ft.	Sq. Meters	Dimensions (Feet)	Banquet Rounds of 10	Reception	Conference	Classroom	U-Shape	Theater	Hollow Square	Exhibit 8x10 vert.
Da Vinci Lawn	20,000	1,858	—	1,000	2,100	—	—	—	—	—	—
Da Vinci Terrace	5,200	483	—	150	200	—	—	—	—	—	—
Fountain Courtyard	9,500	883	—	200	250	—	—	—	—	—	—
Citrus Garden	2,700	251	—	150	200	—	—	—	—	—	—
Tuscany Terrace	3,000	279	—	80	100	—	—	—	—	—	—
Fairways Lawn	20,000	1,858	—	1,500	2,500	—	—	—	—	—	—
Whisper Creek Farm	11,000	1,022	—	400	800	—	—	—	—	—	—



THE RITZ-CARLTON



ADDITIONAL RITZ-CARLTON LOWER LEVEL SPACES



FLOOR PLAN

THE RITZ-CARLTON ORLANDO, GRANDE LAKES
4012 CENTRAL FLORIDA PARKWAY, ORLANDO, FLORIDA 32837
407.206.2400 RITZ-CARLTONORLANDO.COM



THE RITZ-CARLTON
ORLANDO, GRANDE LAKES