

# EVENTS AND GROUPS.



From floor to ceiling, OH Pool to Sky Line Rooftop, Hotel Valley Ho offers one-of-a-kind solutions for corporate groups and business events. Wow your peers or clients with amazing venues and unique options to make your meeting or event memorable and effective. We build programs and events to suit, so link up with one of our event planners, and get to work.

HOTEL  
*Valley Ho*  
Scottsdale, AZ



# AWESOME ACCOMMODATIONS.

Save your company money while you enjoy the advantages of Downtown Scottsdale's landmark hotel, with Hotel Valley Ho's value-added, negotiated group room rates. Take advantage of all the included conveniences like a central Scottsdale location just 10 minutes from Phoenix Sky Harbor International Airport and Downtown Phoenix, plus in-room amenities like separate bathtubs and showers and oversized LCD HD TVs.

Our affiliation with iPrefer Hotel Rewards program means you can earn points for your stays. We're also proud to be a member of Preferred Hotels

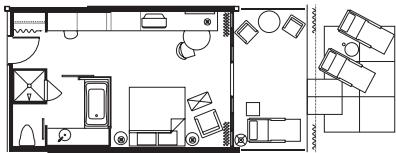
and Resorts, a worldwide collection of classic hotels and resorts that offer exemplary luxury experiences. In addition, Hotel Valley Ho was awarded a AAA Four-Diamond award for customer service, upscale property and amenities, hospitality, and attention to detail.

Hotel Valley Ho offers unique options for meeting spaces, from intimate interviews to events for 500 attendees. For guests needing a longer stay, options are available for extended stays in either the main hotel or the exclusive Tower.

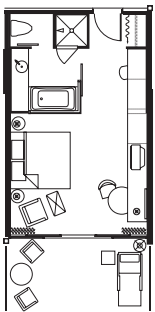
## LOOK WHAT YOU'LL GET

- Largest standard guest rooms in Downtown Scottsdale
- Complimentary WiFi and ethernet internet access
- An oversized patio or balcony for every accommodation
- In-room coffee service
- 24-hour access to high-tech fitness center
- Use of VH Spa facilities including sauna, movement studio and locker rooms
- Complimentary Downtown Scottsdale Trolley
- 24-hour room service
- Complimentary business center use
- Concierge services
- ZuZu, serving breakfast, lunch, and dinner
- Two cool pools
- Same-day dry cleaning service available
- Self-parking options available
- red flower bath product amenities

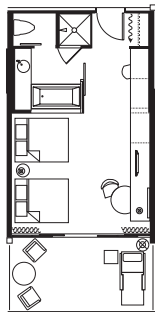
*Not all floor plans drawn to the same scale.*



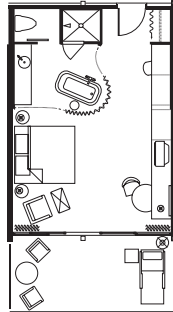
CABANA GUEST ROOM



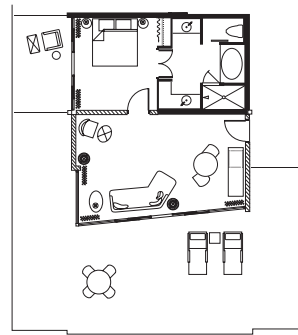
SIGNATURE KING + POOL VIEW KING GUEST ROOM



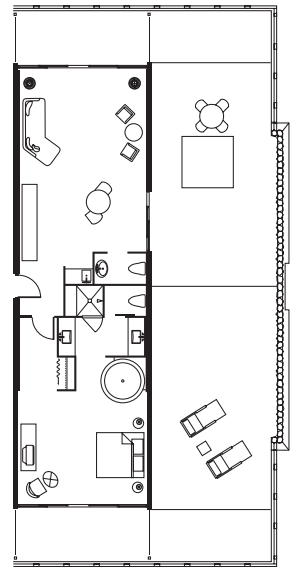
SIGNATURE DOUBLE + POOL VIEW DOUBLE GUEST ROOM



STUDIO GUEST ROOM



TERRACE SUITE



EXECUTIVE SUITE



## THE TOWER.

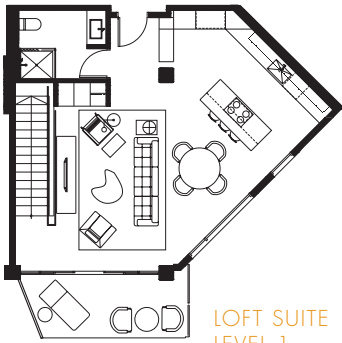
The Tower soars above Hotel Valley Ho, offering sweeping views of Camelback Mountain and Downtown Scottsdale. On the third through seventh floors, guest rooms include Tower Signature Rooms, Tower Suites, and exclusive Loft Suites. Every room reflects the modern elegance of classic mid-century design, from the floor-to-ceiling glass walls to the contemporary subway tiles in the master bath. Highlights include a custom-swivel, LCD HD TV, 1950s-style chairs, stainless-steel hardware, a fully-equipped kitchen, espresso/coffee maker, high-speed internet with WiFi, high-gloss yellow cabinets, iPod hookup, and focal points throughout.

Special conveniences\* for Tower guests begin before you arrive. A personal shopper will stock up on your favorite foods and sundries (upon request), and on arrival you'll receive a management escort to your room. Just ask, and your private chef will offer pre-prepared dinners for you and your guests to enjoy at leisure, or cook favorite specialties right on the spot. The Tower Concierge can also arrange private, guided tours of local art galleries, rentals of any vehicle from Bentleys to Ferraris, tee times at Scottsdale's best golf courses, private shopping excursions, and a whole world of other services.

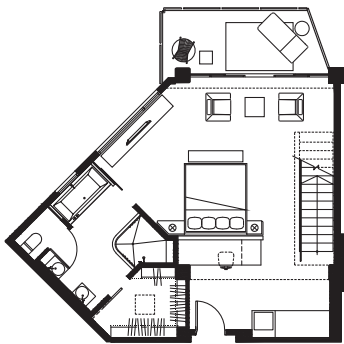
*\*Additional fees will apply. Some floor plans may vary slightly.*

*Not all floor plans drawn to the same scale.*

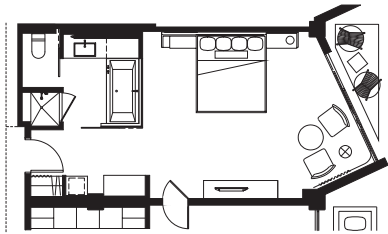
### LOFT SUITE LEVEL 2



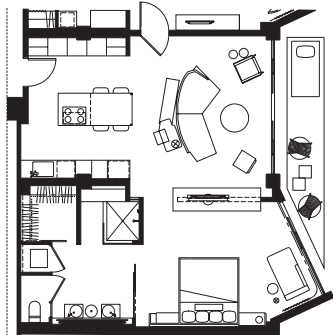
### LOFT SUITE LEVEL 1



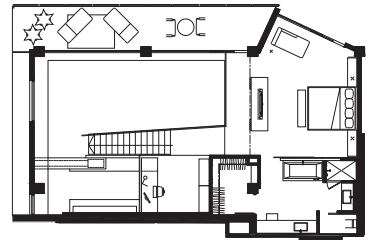
### TOWER SIGNATURE GUEST ROOM



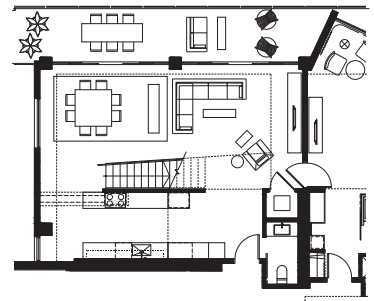
### TOWER SUITE



### PRESIDENTIAL LOFT SUITE LEVEL 2



### PRESIDENTIAL LOFT SUITE LEVEL 1



## MEET IN STYLE.

### OPTIONS TO FIT ANY MEETING, PARTY, OR EVENT

Modern ballrooms and boardrooms blend natural light and digital convenience. Outdoor venues—including the Sky Line Rooftop—make the most of an out-of-the-ordinary setting. Our meeting and event spaces can accommodate a range of guests, from an interview for two to a product launch for 500.

We partner with Encore Event Technologies as our in-house audio-visual provider. Encore is an industry-leading company with an excellent service record. All of our on-site equipment is brand new, from power strips to LCD projectors and everything in between. We also have new 50" to 70" smart LCD televisions in our boardrooms, and stylish seating options.

Guests will also enjoy complimentary internet access, with options to upgrade for a small fee, access to VH Spa facilities, and our high-tech fitness center.



## EXPAND YOUR BRAND.

### ELEVATE YOUR EVENT

At Hotel Valley Ho, the sky's the limit on custom event branding and promotions. See your company's tee shirt on the front desk staff when your group checks in, and let our helpful valet attendants leave a brochure or branded treat in their cars at departure. See your name up in lights, literally, on the iconic Tower. You dream it, we'll do it!\*

### FACILITY BRANDING EXAMPLES

- Gobos on Tower
- Lobby Plasma TV Playing Your Video or Logo
- Wall + Floor Decals of Your Logo or Name
- Custom-Wrapped Podiums in Meeting Space
- Encore Event Technologies Custom VIP Podium

### BRANDED ITEMS EXAMPLES

- Custom Room Key Cards
- Valet Brochure Drop
- Custom Water Bottle Labels
- Custom Labels on Candy Shop Dessert
- Staff-Approved Apparel (Hat, Tee)
- Moon Balloon Overlay

\*All branding options subject to hotel approval.



BALLROOMS	Square Footage	Square Meters	Length x Width	Ceiling	Banquet	Classroom	Conference	Reception	Theater	U-Shape
				Height						
SoHo Room	4,000	372	72' x 55'6"	17'	300	240	—	550	500	80
SoHo I	2,000	186	36' x 55'6"	17'	140	110	50	275	250	40
SoHo II	2,000	186	36' x 55'6"	17'	140	110	50	275	250	40
Valley Ho Room	2,410	224	41' x 60'	11'	160	150	60	200	256	60
Valley Ho I	1,205	112	41' x 30'	11'	80	60	30	100	128	30
Valley Ho II	1,205	112	41' x 30'	11'	80	60	30	100	128	30

### MEETING ROOMS + BOARDROOMS

Sands	3,500/1,500	325/139	60' x 58'	11'	200	160	60	350	250	50
Boardroom Courtyard	1,200	111	—	—	70	—	—	125	—	—
Tropicana Room	1,152	107	47' x 25'	9'	70	60	46	125	120	40
Sahara Boardroom	760	71	31' x 25'	9'	—	—	18	—	—	—
Dunes Room	760	71	31' x 25'	9'	60	35	28	70	60	26
Dunes I	356	33	15' x 25'	9'	20	15	14	30	35	14
Dunes II	356	33	15' x 25'	9'	20	15	14	30	35	14
Riviera Boardroom	356	33	15' x 25'	9'	—	—	12	—	—	—
HVH Boardroom	308	29	14' x 22'	9'	—	—	12	—	—	—
Hospitality Suite	850/900	79/84	34' x 25'	9'	—	—	10	30	—	—

### OUTDOOR

Palm Court	5,000	465	—	—	300	—	—	500	—	—
OH Pool	6,750	627	—	—	225	—	—	325	—	—
Sky Line Rooftop	3,500	325	—	—	170	—	—	250	—	—
Main Place Courtyard	2,000	186	40' x 50'	—	160	—	—	275	—	—
OHasis Pool	1,500	139	—	—	80	—	—	150	—	—
East Palm Lawn	2,000	186	—	—	160	—	—	275	—	—



ZUZU | VH SPA | OH POOL BAR + CABANAS | OHASIS POOL  
6850 E. Main St. Scottsdale, AZ 85251 | hotelvalleyho.com | 480.248.2000

