



WEDDINGS  
*at Santa Anita Park*

## *Congratulations*

Thank you for considering Santa Anita Park for your wedding venue.

We offer the most romantic, picture-perfect spaces for this biggest of days, rich in details that reflect the elegance and glamour of our historic venue, designed just for one of life's most memorable days.

We feature five Reception venues, and four Ceremony venues, all located on our grounds. Santa Anita Park offers private parking with valet services, extensive on-hand staff, and the flexibility to decorate spaces to your liking. Our culinary artists stand ready to surprise and delight you with creative menus, wine pairings, custom cakes and more.

Santa Anita can also facilitate your rehearsal dinners, bridal showers, groom's parties and wedding brunches, reflecting the theme you select for your wedding reception.

Let us help make your dream wedding a reality, at iconic Santa Anita Park.





# THE WEDDING CEREMONY

Paddock Gardens, Track House & Infield  
Microphone, Sound System  
Fruit Infused Water Station  
Heaters or Umbrellas

### Complimentary Services Provided

Floor Length Linens	White, Ivory or Black
Napkins	Any Color
Dining Tables	Round
China	White Fontessa Porcelain
Votive Candles	(4) per Table
Chairs	Gray or Gold Banquet
Customized Menu Cards	White or Ivory
Property use for Engagement Photos	

### Staffing

Servers (included)	(1) per (15) guests
Bartenders (included)	(1) per (100) guests
Bridal Hostess	Complimentary
Additional Server	\$175.00 each
Additional Bartender	\$150.00 each
Chef Attendant	\$300.00 each
Sushi Chef	\$300.00 each
Cake Cutting Fee	\$5.00 per person (if provided by outside vendor)

Call 626 574-6383 for the Chandelier Room,  
Track House and the 100 to 1 Club.

Call 626 574-6474 for all other space inquiries.



## *The Chandelier Room*

Easily one of the most beautiful spaces in all of Los Angeles County, the Chandelier Room has a stunning Art Deco bar and lounge, which invites guests to linger and relax in an exquisite setting. The newly renovated Chandelier Room boasts a baby Grand piano, two opulent staircases, a foyer and bi-level balcony with sweeping views of the San Gabriel Mountains. The space has large luxury private bathrooms, with an extensive vanity bridal area and a hidden 1930s Speakeasy Bar. Of course, the Chandelier Room is accented by the four original magnificent chandeliers floating above the space and out-skirted with the original 1930s artwork.

Accommodating 75-175 guests for a seated dinner, this space can be utilized for Ceremonies, Receptions, Bridal Showers, and Groom's parties.

Facility Fee: \$10,000





## *The Directors' Room*

A salute to a time gone by, Santa Anita's prestigious Directors' Room overlooks the finish line in distinguished elegance. Surrounded by imported, antique wood providing an old world feel, the Directors' Room was once the private domain of the visionaries who built Santa Anita into one of the world's premiere sporting venues. Today the Directors' Room offers a separate bar and foyer, fireplace and seating that overlooks the San Gabriel Mountains.

Accommodating up to 40 to 90 guests, the Directors' Room provides a traditional experience from when the only ones allowed in the room were those who owned the room.

Facility Fee: \$2,500





## *100-to-1 Club*

The 100 to 1 Club is a terrace-style space that features an unobstructed view of the mountains' backdrop. This space has a relaxed lounge-style feel to it, and can be utilized for Receptions, Bridal Showers and Groom's Parties.

Accommodating up to 150 guests, 100 to 1 Club is the perfect location for entertainment, cocktail parties and social gatherings in an action-filled setting unique to Santa Anita Park.

Rental Fee: \$4,000



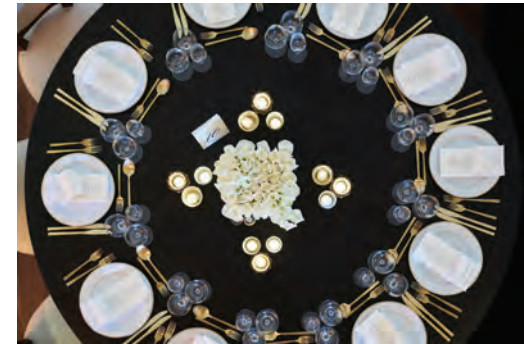


## *The Club House*

A covered multi-level area located on the 1st floor at the Club House Turn, this venue offers exceptional views of the post parade, private pari-mutuel windows and television monitors.

Accommodating from 50 to 800 guests, Club House provides a large, exclusive group area available to be transformed into whatever character is desired against one of the most magnificent backdrops in Southern California.

Rental Fee: \$4,000





## *The Mezzanine Sports Lounge*

The Mezzanine Sports Lounge is located in the grandstand, with an open air setting. The bar is located in the middle of the space, and seating may be arranged to preferences.

Rental Fee: \$4,000







## *The Paddock Gardens*

The Paddock Gardens offer limitless arrangement possibilities and settings - for ceremonies or receptions. No matter the area you pick, picturesque gardens surround you. A dance floor can be placed as pleased, and mobile bars can be stationed accordingly.

Ceremony Site Fee: Starts at \$1,000

Facility Fee for Receptions: \$4,000





## *Kingsbury Fountain*

The Kingsbury Fountain is one of the most iconic features at the famed Santa Anita Park. Ceremonies can be held here, with the fountain flowing in the background. The large grass area surrounding it allows for the perfect seating or walkway area.

Ceremony Fee: Starts at \$1,000



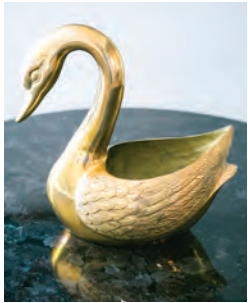


## *The Infield*

Far and away the most expansive area at Santa Anita Park, the Infield offers a massive open area to conduct festivities, with the capability to use your imagination and create whatever environment you want. Surrounded by palm trees and flowing fountains, the Infield is the perfect place for a large gathering in the open air.

Ceremony Fee: Starts at \$1,000





## *The Track House*

Underneath the trees by the far turn lies The Track House. This space was previously the house of the track superintendent, but now serves as one of the most desired locations for events on the property. The house features a porch and a quaint grassy area, to give your ceremony that intimate feel.

Ceremony Fee: Starts at \$2,000





# SANTA ANITA PARK

285 West Huntington Drive  
Arcadia, California 91007  
[santaanita.com/weddings](http://santaanita.com/weddings)

