

What's around the hotel?



We are perfectly placed to make your stay the best it can be.

- Located within minutes of nearby landmarks such as Cockle Bay, King Street Wharf and the CBD
- A short walk to the International Convention Centre Sydney (ICC)
- 2-minute walk to Chinatown
- 5-minute walk from Town Hall train station with direct access to the domestic and international airport
- Less than 10-minutes' walk to quality shopping destinations such as the QVB and Pitt St Mall
- 16-minute walk to Barangaroo shopping and entertainment precinct
- 20-minute drive from Sydney Domestic and International Airport



Dive into the very best of Sydney to bring out yours

Global offices

SYDNEY, AUSTRALIA

150 Day Street
Sydney, NSW 2000
Australia
T: +61 2 9260 3013
gsosydney@pphg.com

BEIJING, CHINA

No.2 Hua Yuan Street,
Xicheng District,
Beijing, 100032 China
T: +86 10 6623 9724
gsobeijing@pphg.com

SHANGHAI, CHINA

Room 605 K. Wah Centre
1010 Huai Hai Zhong Road
Shanghai 200030, China
T: +86 21 6136 4127
gsoshanghai@pphg.com

HONG KONG

WeWork Tower 535
Office 11019, Causeway Bay
Hong Kong
T: +852 3905 4688
gsohongkong@pphg.com

TOKYO, JAPAN

13F Jingumae Tower Building,
1-5-8 Jingumaw, Shibuya-Ku,
Tokyo, 150-0001 Japan
T: +81 3 6741 7112
gsotokyo@pphg.com

SINGAPORE

7500A Beach Road
The Plaza, #03-301
Singapore 199591
T: + 65 6808 1238
gsosingapore@pphg.com

LONDON, UK

Tempest House
38 Hillside Road, Ashtead
Surrey KT21 1RX, UK
T: +44 0 1372 210210
gsouk@pphg.com

NEW YORK, USA

244 5th Avenue,
Suite D-215
New York, N.Y. 10001, USA
T: +1 973 288 1886
gsoneyork@pphg.com

SAN FRANCISCO, USA

188 King Street, Suite 509
San Francisco, CA 94107
USA
T: +1 415 732 5818
gsosanfrancisco@pphg.com

PARKROYAL DARLING HARBOUR, SYDNEY

150 Day Street, Sydney
NSW 2000, Australia
T: 61 2 9260 3333
enquiry.prsyd@parkroyalhotels.com

parkroyalhotels.com



Follow us on:



DISCOVERY

Located on the city-side of Darling Harbour, offering premium accommodation for both business and leisure, with 340 rooms, Club Rooms with Lounge access, conference facilities, gym, complimentary Wi-Fi, as well as your choice of dining options. Shopping precincts, the International Convention Centre, Town Hall Station, the CBD, Barangaroo, renowned dining districts and other iconic attractions are all easily reachable.

Superior	200
Darling Harbour	58
Premier	19
Club	41
Executive Suite	15
Club Suite	7

Rooms and Suites

Ready for a little rejuvenation? All our 340 rooms and suites will more than satisfy your need to relax and unwind. Enhance your experience further with our Club Rooms, with Club Lounge access and complimentary benefits.

Includes

- Choose from plush king-sized bed or twin singles
- Complimentary high-speed Wi-Fi
- Widescreen TV and Bluetooth connectivity
- Interconnecting rooms and packages available

PARKROYAL
DARLING HARBOUR
SYDNEY

Ready for the ultimate indulgence?



PARKROYAL Club Room Exclusive Privileges

- Exclusive access to the PARKROYAL Club Lounge with panoramic views overlooking Darling Harbour
- Priority check-in and Late check-out
- Complimentary breakfast, all day refreshments, twilight drinks and canapés

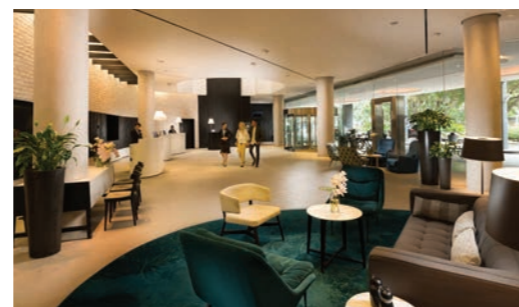
We've got everything you need for your event



Key Features

Whether you need a ballroom or a boardroom, we can cater to your needs – and deliver an event which will delight!

- Over 1,100 square metres of events space
- Seven versatile meeting rooms, including a pre-function space with Darling Harbour views
- The latest audio-visual technology, including integrated sound systems and projectors
- The pillar-less Blackwattle Room features three drop-down high-definition projectors for high impact presentations
- Complimentary high-speed Wi-Fi access
- On-site technical support
- **BARKERS** and **ABODE Bistro & Bar** are ideal spaces for bespoke private functions
- Professional planners to help you co-create a winning event



Restaurant and Bar

Delight diners of all tastes

BARKERS Restaurant – offers a fresh and contemporary ambience, with buffet breakfast served daily

ABODE Bistro & Bar – award-winning, offering modern Australian cuisine with a focus on fresh flavours and locally sourced produce - and a drinks menu that's sure to quench your thirst with a range of boutique wines, craft beer and signature cocktails. Open daily for lunch and dinner:

Sunday and Monday 3:30pm until late
Tuesday to Saturday 11:30am until late

Relax and Unwind

Our fitness facilities are sure to get your pulse up

- Gym with state-of-the-art training equipment
- Weights area
- Yoga mats and complimentary filtered water



	Floor Space	Ceiling Height	Boardroom	U-Shape	Theatre	Classroom	Cocktail	Banquet	Cabaret
Blackwattle Room - 3 sections	204m ²	3m	70	55	280	135	280	150	135
Blackwattle Room - 2 sections	136m ²	3m	44	36	190	90	190	90	90
Blackwattle Room - 1 section	68m ²	3m	26	26	90	45	90	50	45
Darling Harbour Boardroom	20m ²	3m	12	-	-	-	-	-	-
BARKERS Restaurant	433m ²	-	-	-	-	-	280	170	-
Cockle Bay Room	70m ²	3m	30	34	80	54	90	50	48
Rose Bay Room	80m ²	2.7m	36	31	80	42	95	50	45
Walsh Bay Room	25m ²	3m	12	9	25	18	25	10	9
ABODE Bistro & Bar	268m ²	-	-	-	-	-	180	60	-