



RESORT • SPA • CASINO
LAS VEGAS



Forbes

TRAVEL GUIDE





Welcome to the M Resort, a distinctively
different resort experience.

Hotel Lobby

390 Four Star resort room accommodations including spa-like bathrooms and breathtaking views of the Las Vegas Strip or serene mountain ranges.



Double Queen Room



Loft Suite

Sweet bites on the go- pastries, chocolates, gelato, plus sandwiches, salads and freshly brewed coffees.



Bakery Cafe



Prime Steaks and Seafood
Grilled to Perfection.

Anthony's Prime Steak and Seafood

Social • Contemporary • Fresh • Asian Specialties + Sushi




Jayde Fuzion

Handmade pasta dishes made fresh and fast plus a variety of signature Italian fare.



Marinelli's Pasta Bar

The image shows the interior of a restaurant with a modern, industrial aesthetic. The foreground is filled with several square tables and black chairs, each set with a folded brown napkin and a small condiment tray. The floor is covered in a patterned carpet with a repeating circular motif. In the background, a long bar with a red-lit base and white-topped stools is visible. The ceiling features a grid of recessed lighting, and the walls are made of light-colored panels. Large windows on the left side offer a view of the outdoors. The overall atmosphere is clean and contemporary.

Las Vegas' favorite for Gourmet Burgers and Specialty Beer. Open daily for breakfast at 7am.

Anthony's Gourmet Burgers & Brews



Named best in Las Vegas. Over 200 items daily plus complimentary beer and wine with your meal.

Studio B Buffet



Boutique chic atmosphere, four star service, award-winning cuisine and spectacular floor to ceiling views for your special event.

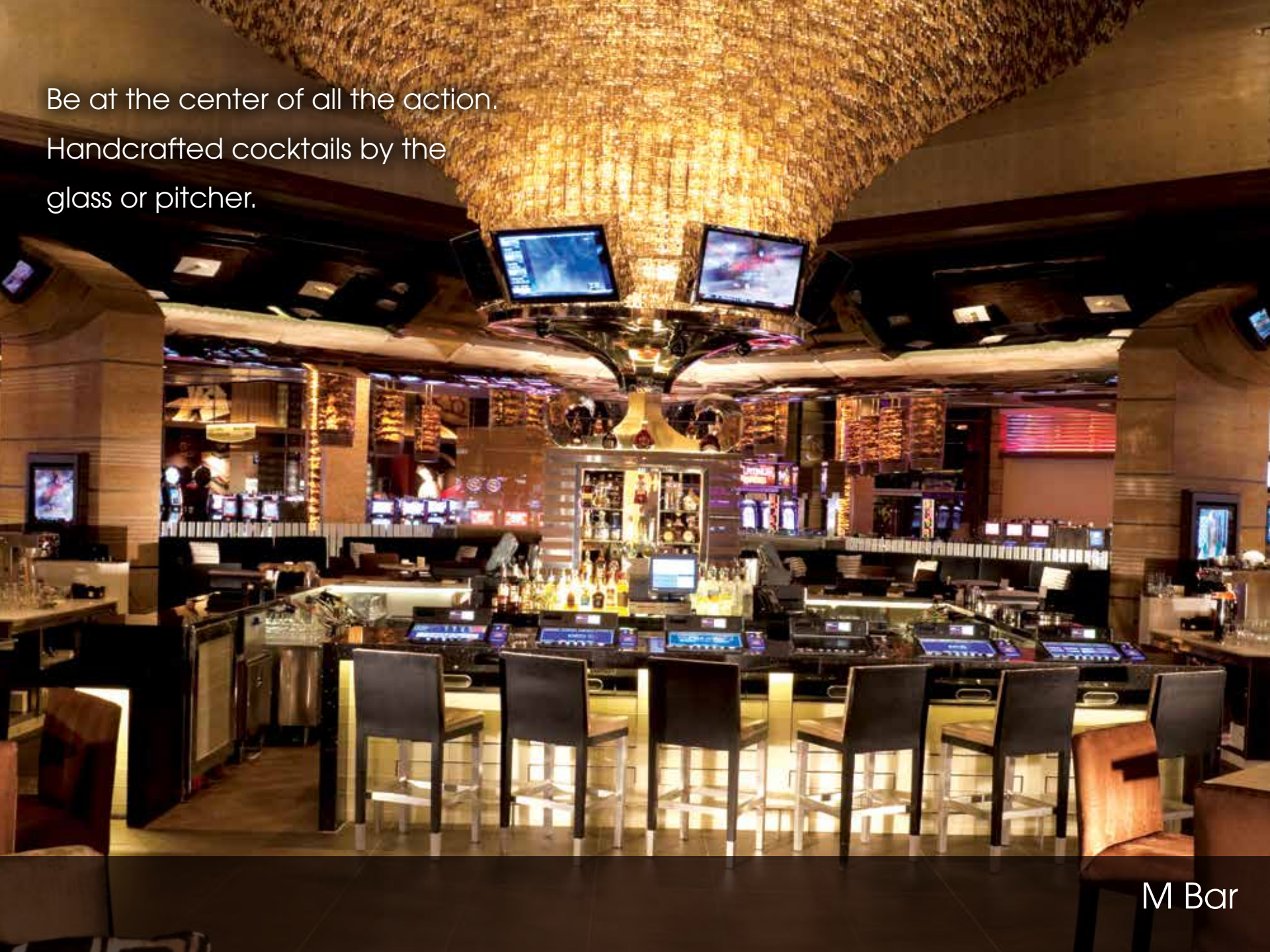
LUX – Special Events & Weddings



Over 92,000 sq. ft. of gaming excitement.
Slots, Tables, State-of-the-art Race and Sports Book,
Marquee Rewards Club and VIP Players Lounge.

Casino Floor

Be at the center of all the action.
Handcrafted cocktails by the
glass or pitcher.



The image shows the interior of a modern bar. A large, dark, circular structure with a prominent cylindrical light fixture hangs from the ceiling. The bar area is visible in the background, featuring a curved bar with stools and several televisions mounted on the wall. The lighting is warm and ambient, creating a sophisticated atmosphere. The floor has a patterned carpet with red and black circular motifs.

Catch all the sports action plus enjoy
96 of the coldest brews on tap plus a
variety of specialty ales and stouts.

32° Draft Bar



Contemporary Wine Cellar and Tasting Room plus handcrafted cocktails and a calendar of live entertainment.

Hostile Grape



92,000 sf of open and dynamic meeting and conference spaces include optimum customization, technology and connectivity for turn-key events.

Convention Lobby



The Milan Ballroom includes a built-in stage for stunning special events.

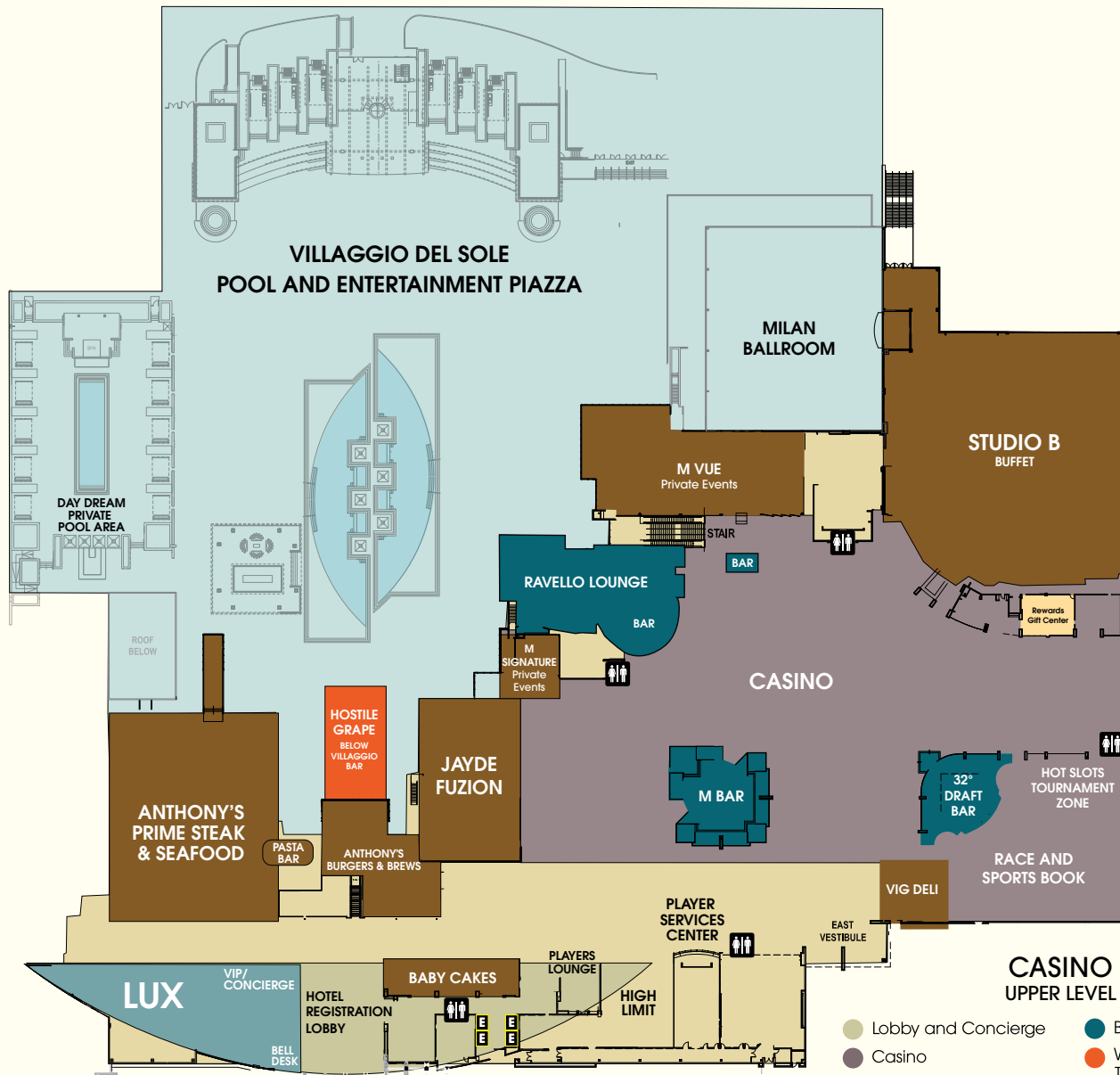
Milan Ballroom



Forbes Four Star Spa Mio offers 16 treatment rooms, sauna, steam and a variety of treatments and salon services plus a state-of-the-art fitness center.

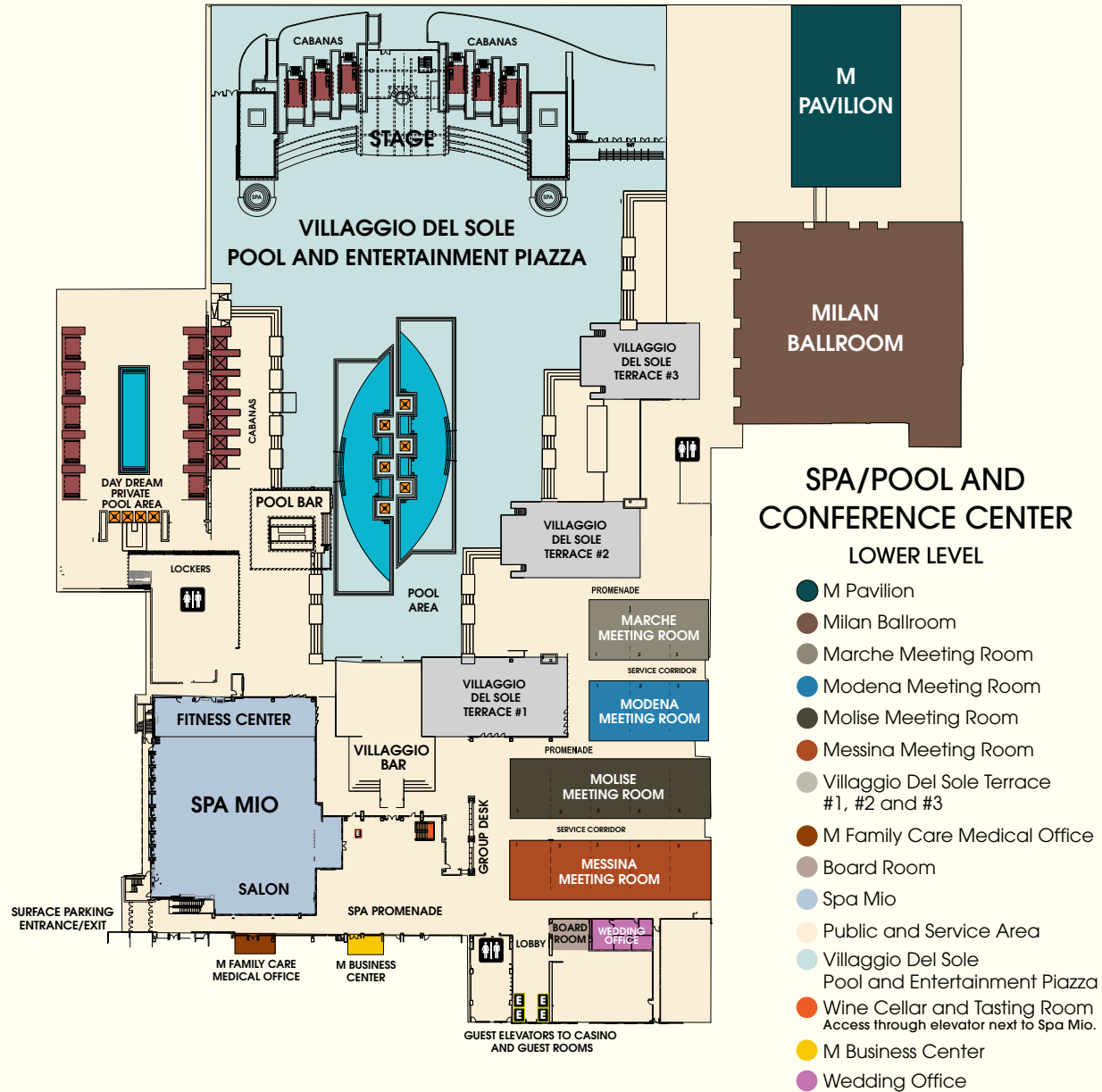
Spa Mio



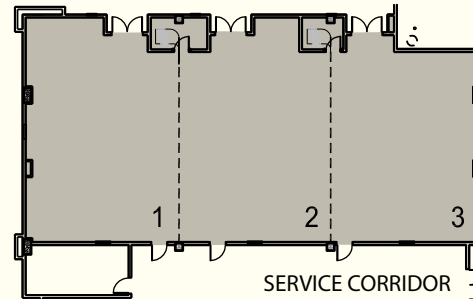


**CASINO
UPPER LEVEL**

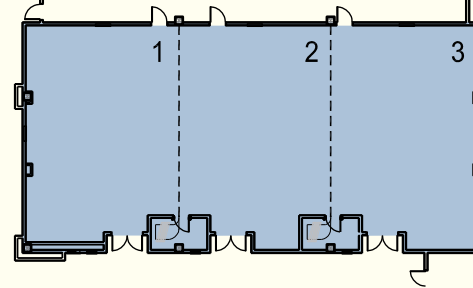
- Lobby and Concierge
- Bars and Entertainment
- Casino
- Restaurants and Terraces
- Wine Cellar and Tasting Room



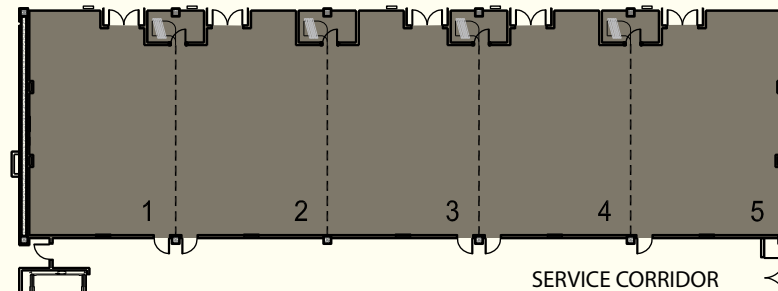
Marche



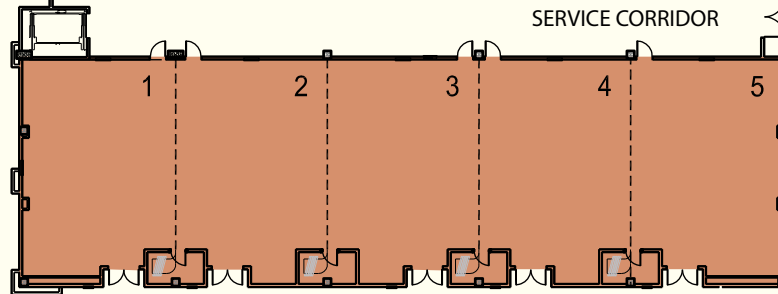
Modena



Molise



Messina



Meeting Room Capacities

Marche

Room Name	Sq. Ft.	Dimensions		Ceiling	Theater	Classroom*	Banquet**	Reception	U-shape	H-square	Conference	10x10
		W	L									Exhibits
Main	3382	89	38	12	363	210	230	305	70	75	70	16
Room 1	1140	30	38	12	121	70	88	110	30	35	25	6
Room 2	1140	30	38	12	121	70	88	110	30	35	25	6
Room 3	1102	29	38	12	114	68	88	110	30	35	25	6

Modena

Room Name	Sq. Ft.	Dimensions		Ceiling	Theater	Classroom*	Banquet**	Reception	U-shape	H-square	Conference	10x10
		W	L									Exhibits
Main	3382	89	38	12	363	210	230	305	70	75	70	16
Room 1	1140	30	38	12	121	70	88	110	30	35	25	6
Room 2	1140	30	38	12	121	70	88	110	30	35	25	6
Room 3	1102	29	38	12	114	68	88	110	30	35	25	6

Molise

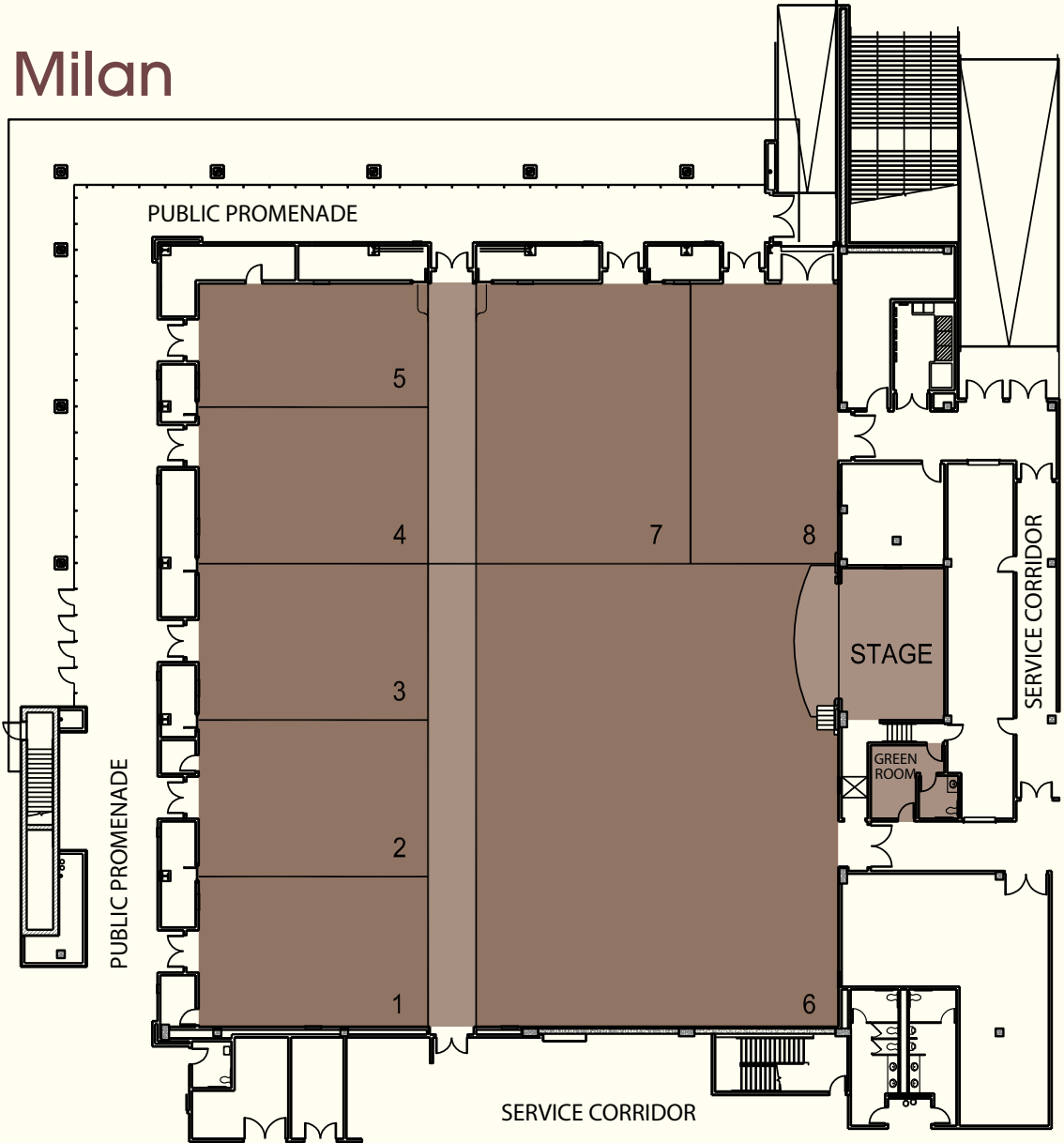
Room Name	Sq. Ft.	Dimensions		Ceiling	Theater	Classroom*	Banquet**	Reception	U-shape	H-square	Conference	10x10
		W	L									Exhibits
Main	5662	149	38	12	595	350	385	520	85	110	70	30
Room 1	1102	29	38	12	114	68	88	110	30	35	25	6
Room 2	1140	30	38	12	121	70	88	110	30	35	25	6
Room 3	1140	30	38	12	121	70	88	110	30	35	25	6
Room 4	1140	30	38	12	121	70	88	110	30	35	25	6
Room 5	1140	30	38	12	121	70	88	110	30	35	25	6

Messina

Room Name	Sq. Ft.	Dimensions		Ceiling	Theater	Classroom*	Banquet**	Reception	U-shape	H-square	Conference	10x10
		W	L									Exhibits
Main	5662	149	38	12	595	350	385	520	85	110	70	30
Room 1	1102	29	38	12	114	68	88	110	30	35	25	6
Room 2	1140	30	38	12	121	70	88	110	30	35	25	6
Room 3	1140	30	38	12	121	70	88	110	30	35	25	6
Room 4	1140	30	38	12	121	70	88	110	30	35	25	6
Room 5	1140	30	38	12	121	70	88	110	30	35	25	6

*Classroom seating based on 4 people per 8' table. **Banquet seating based on 12 people per 72" round table.
Capacities are subject to change based on allowances for head tables, staging, audio visual and catering requirements. ***Inclusive of Corridor Area.

Milan



Ballroom Capacities

Milan

Room Name	Sq. Ft.	Dimensions		Ceiling	Theater	Classroom*	Banquet**	Reception	U-shape	H-square	Conference	10x10
		W	L									Exhibits
Main	17324	122	142	18	1905	1140	1236	1645	N/A	N/A	N/A	86
Room 1	1320	30	44	18	145	86	108	125	32	36	28	7
Room 2	1320	30	44	18	145	86	108	125	32	36	28	7
Room 3	1320	30	44	18	145	86	108	125	32	36	28	7
Room 4	1320	30	44	18	145	86	108	125	32	36	28	7
Room 5	1056	24	44	18	85	65	72	100	26	30	20	5
Room 6	6230	70	89	18	685	375	420	600	N/A	N/A	N/A	32
Room 6***	7031	79	89	18	725	430	444	670	N/A	N/A	N/A	35
Room 7	1890	35	54	18	208	123	144	180	40	48	36	9
Room 7***	2376	44	54	18	262	155	168	230	48	58	42	12
Room 8	1890	35	54	18	208	123	144	180	40	48	36	9
Freight Door/Rm 8		10	14									
Stage	600	30	20									
Stage Plus												
Proscenium	900	30	30									

M Boardroom

Room Name	Sq. Ft.	Dimensions		Ceiling	Theater	Classroom*	Banquet**	Reception	U-shape	H-square	Conference	10x10
		W	L									Exhibits
Boardroom	405	27	15	10	N/A	N/A	N/A	N/A	N/A	N/A	12	N/A

Group Desk / Villaggio Del Sole (Outdoor)

Room Name	Sq. Ft.	Dimensions		Ceiling	Theater	Classroom*	Banquet**	Reception	U-shape	H-square	Conference	10x10
		W	L									Exhibits
Registration Desk			50	11								
Office A	100	10	10	8								
Office B	132	11	12	8								
Villaggio Del Sole Terrace #1	6550	108	75	74			370	500				
Villaggio Del Sole Terrace #2	5460	92	63	14			320	450				
Villaggio Del Sole Terrace #3	4975	86	63	OPEN			270	400				
Wine Cellar	5000											

*Classroom seating based on 4 people per 8' table.

**Banquet seating based on 12 people per 72" round table.

Capacities are subject to change based on allowances for head tables, staging, audio visual and catering requirements.

***Inclusive of Corridor Area.

M Pavilion

Exciting, Expansive Events.

When you want an out-of-the-ordinary meeting or event experience, look no further than the M Pavilion. The newest addition to M Resort's 60,000 square feet of dynamic meeting space is the ideal venue for expositions, catered events, high-energy concerts, boxing matches and other large-scale events.

The 25,000 square foot M Pavilion offers open, expansive spaces for optimum configurations pillar-less with a capacity of 2,300. Our premier facility offers seamless ground level entry from the M Resort ballrooms to provide an exceptional guest experience.

Add in the M Resort's signature four star service and you'll be ensured that your meeting and event needs are met at every level.





RESORT • SPA • CASINO
LAS VEGAS

12300 LAS VEGAS BLVD SOUTH • HENDERSON, NEVADA 89044

P 702.797.1000 • F 702.797.3000 • www.theMresort.com