



Meet Grand.



Reno | NV

Make Your Next Meeting or Event **GRAND.**

It's time to rethink your next meeting or event. To break out of the box. To go beyond what you know. It's time to be unconventional. At Grand Sierra Resort and Casino in Reno-Tahoe, you'll discover everything you want in a beautiful destination, but most importantly, the unexpected.

A Grand Welcome

Under the leadership and direction of Alex Meruelo, chairman and CEO of the Meruelo Group, Grand Sierra Resort has established itself as one of the top meeting and event destinations in the country.

"At Grand Sierra Resort we are committed to making your meeting and event experience the finest in the industry. We are steadfastly dedicated to providing superior service and an excellent guest experience. As owner of Grand Sierra Resort, you have my word on it."

Alex Meruelo
Owner, Grand Sierra Resort





**Defy Convention
and Make Your Next
Meeting or Event
Grand.**

Grand Sierra Resort features 2,000 guest rooms and suites, 45 meeting rooms and over 200,000 square feet of flexible function space located in a separate wing of the resort, away from the lobby and casino area, and is accessible directly from the guest room elevators. The Grand Theatre is an ideal venue for keynote speakers and general sessions. Grand Sierra Resort can accommodate groups from 10 to 4,000 people with more than 35 breakout rooms.





Main Floor

With over 100,000 square feet of space, the main floor of **Grand Sierra Resort** is where you'll find our bars, lounges, restaurants and, of course, **Grand Theatre**, with a seating capacity of 2,700. From the lobby, you'll have easy access to **Starbucks Coffee** and **2nd Street Express Café**. Continue through the lobby and you'll find several retail shops. Further down are convention rooms and the **Grand Sierra Bowling Center**. Traveling north from the front desk, you'll discover Restaurant Row, home to **Charlie Palmer Steak**, **Charlie Palmer Lounge**, **California Pizza Kitchen**, **Rim**, **The Grand Buffet**, **Uno Más**, **Reserve Wine Bar**, and **Grand Café**. Located at the north end of the main floor is the **Grand Theatre** and **LEX Nightclub**, the areas premier nightlife venue.

*Capacity figures are subject to change, depending on space allocations for head table, dance floor, staging and catering requirements.

Grand Ballroom



The greatest occasions demand a great location, and our Grand Ballroom is certainly the place to convene on a grand scale. The Grand Ballroom and Grand Salon offer 39,846 square feet of meeting space and are adorned with beautiful crystal chandeliers. The Grand Salon has 9,000 sq.ft of lockable pre-function space, perfect for registration and a lounge area. Theater-style seating in the ballroom can accommodate 3,600 guests. The room can be readily configured via moveable walls into the Reno Ballroom (13,500 square feet) and the adjoining Tahoe Room (8,673 square feet). The four Carson meeting rooms provide space for up to 150 attendees each.

The Grand Ballroom is in a separate wing away from the casino and has easy access to guest room elevators.

Grand Ballroom Capacities*

	Theater	School Room	Banquet	Reception	10'X10' Exhibit
Grand Ballroom	2,900	1,700	1,800	3,600	136
Grand Salon	-	-	-	1000	34
Tahoe Room	750	450	500	800	52
Reno Ballroom	250	750	800	1,500	79
Carson Ballroom	600	375	400	800	52
Carson 1	150	90	90	150	9
Carson 2	150	90	90	150	9
Carson 3	150	90	90	150	9
Carson 4	150	90	90	150	9

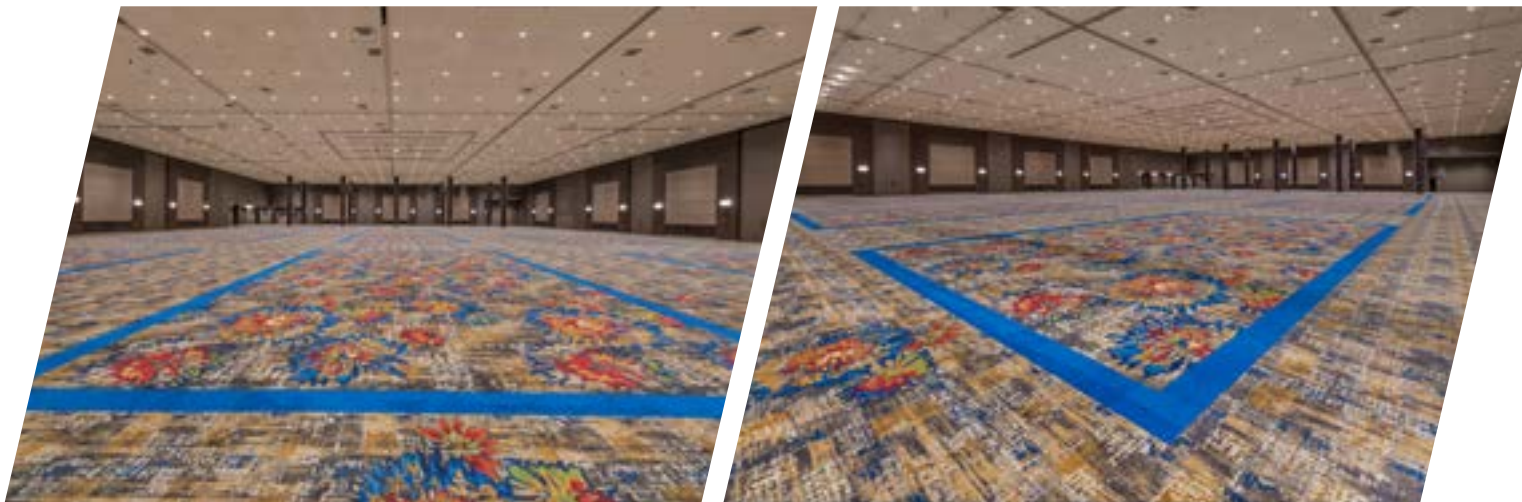


Summit Pavilion



The Summit Pavilion Capacities*

THEATER	SCHOOL ROOM	BANQUET	RECEPTION	10'x10' EXHIBIT
4,000	1,700	2,140	4,000	261

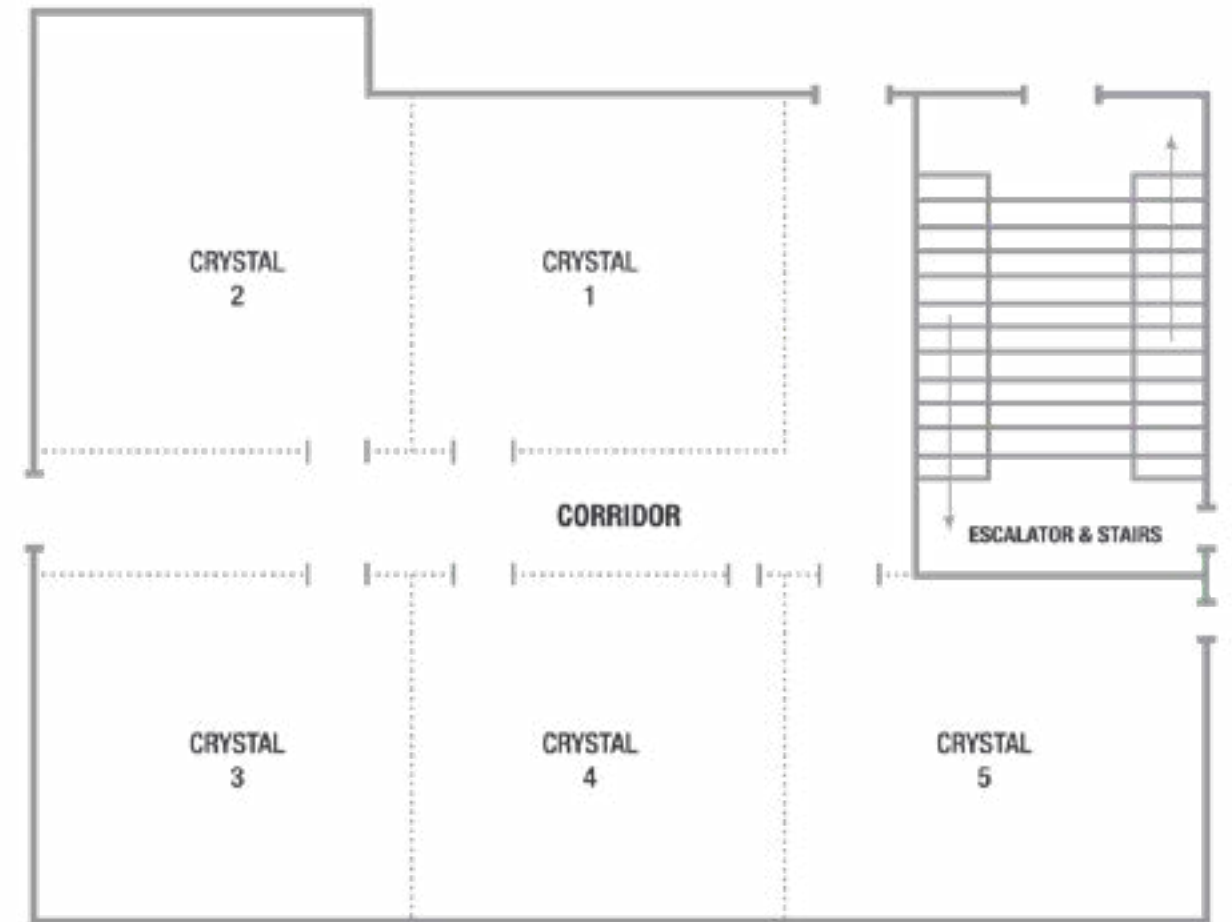


The Summit Pavilion

The Summit Pavilion offers a spacious, fully carpeted exhibition area for trade shows and booth displays. A 2,944 square foot entry and registration area leads to the main exhibition floor. The Pavilion contains 45,312 square feet of space, enough to accommodate 300 8'x10' booths or a general session for 4,000. The room is equipped with full power and water with a ceiling height of 25 feet and convenient freight access located on the northwest corner of the property with a drive-up ramp.

*Capacity figures are subject to change, depending on space allocations for head table, dance floor, staging and catering requirements.

Crystal Ballroom



Dotted lines indicate moveable walls.

The Crystal Ballroom is ideal as a junior ballroom for groups up to 750 people. The room is 7,096 sq.ft and can be configured into five breakout rooms with seating for up to 96 guests each.

Crystal Ballroom Capacities*

	THEATER	SCHOOL ROOM	BANQUET	RECEPTION	10'x10' EXHIBIT
Crystal Ballroom	750	270	420	750	40
Crystal 1	96	60	70	96	
Crystal 2	96	60	70	96	
Crystal 3	96	60	70	96	
Crystal 4	96	60	70	96	
Crystal 5	96	60	70	96	
Crystal 1 & 2	240	130	140	240	
Crystal 3 & 4	240	130	140	240	
Crystal 3, 4 & 5	385	190	210	385	

Spa Level

On the Spa Level, you can find a variety of shopping, food outlets, Grand Sierra Cinema, FunQuest Family Arcade, and the Wedding Chapel. The Spa and Fitness Room, Beauty Salon, and FedEx are also located on this level.



Nevada Conference & Exhibition Center

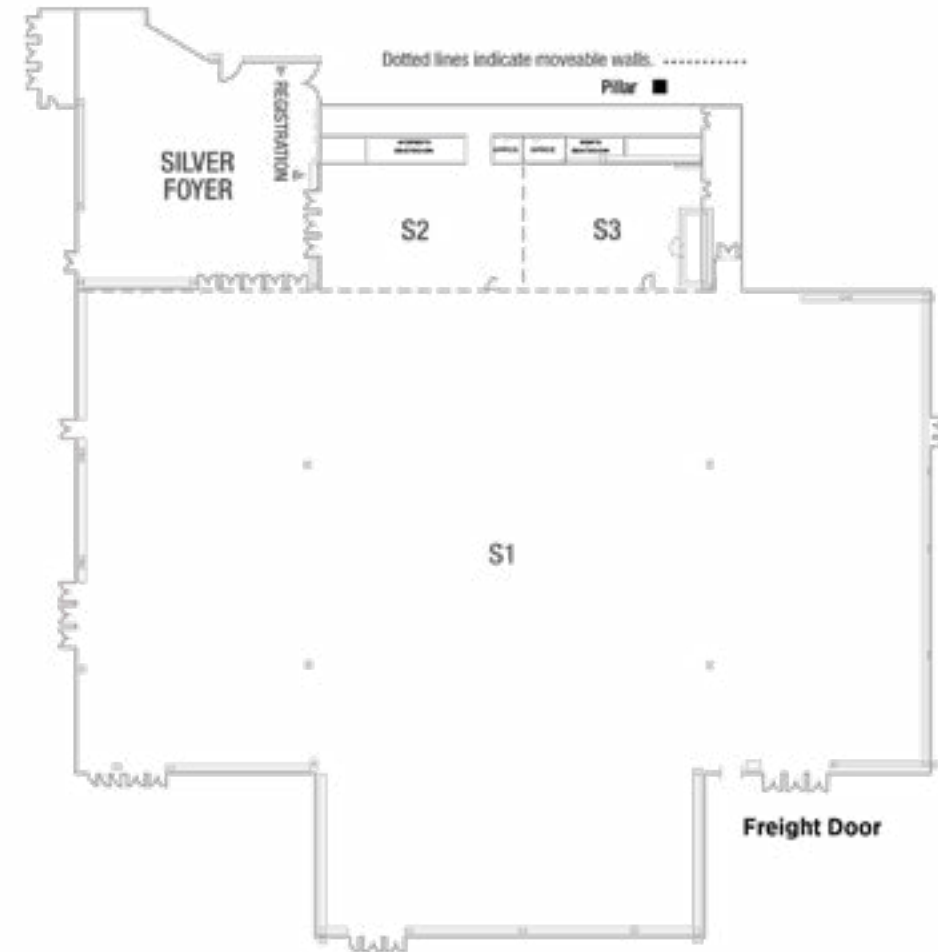
The Nevada Conference & Exhibition Center offers 44,115 square feet of meeting and exhibit space, making it ideal for seminars, banquets, and exhibits. Twelve breakout rooms feature seating for 30 to 100 guests. Located on the Spa Level, the Nevada rooms have direct access to FedEx and offer two show offices, a dedicated registration area and pre-function foyer. Freight access is ground level with no weight limitations.

Exhibition Hall total dimensions (with walls retracted): 44,115 square feet

- . 194 8'x10' booths
- . 180 10'x10' booths
- . 110 10'x10' booths (with walls retracted)

Nevada Conference & Exhibition Capacities*

	THEATER	SCHOOL ROOM	BANQUET	RECEPTION	10'x10 EXHIBIT
Nevada Conference & Exhibition Center	1,200	800	2,200	1,630	180
Nevada	400	300	300	630	100
Nevada Foyer	200	160	224	400	28
N1-N6	90	72	72	90	
N7	100	78	80	100	
N8	90	60	64	80	
N9	90	72	72	90	
N10	90	72	72	90	
N11	80	60	64	80	
N12	30	21	16	30	



Silver State Pavilion

The Silver State Pavilion is perfect for a variety of trade shows with heavy equipment, meetings, and events. It features 25-foot ceilings and 41,364 square feet of meeting space, including two separate meeting rooms and a foyer. Theater-style seating accommodates 2,240 people, schoolroom-style seating accommodates 1,326 people and banquet-style seating accommodates 1,760 people. The Pavilion has a ground floor freight door entrance with no weight limitations.

Silver State Pavilion Capacities*

	THEATER	SCHOOL ROOM	BANQUET	RECEPTION	10'x10 EXHIBIT
Silver State Pavilion	2,240	1,326	1,760	2,240	202
S1	2,200	1,200	960	2,240	172
S2	210	108	96	210	
S3	210	108	96	210	
S2 & S3	450	225	192	450	

Executive Level

The Mezzanine meeting rooms are located one level above the casino floor.

The Executive Level meeting rooms offer an ideal environment for breakout sessions or smaller social gatherings. Configurations and capacities range from 24 up to 200 people for theater or reception-style arrangements in our largest adjoining rooms.



Executive Level Meeting Room Capacities*

	THEATER	SCHOOL ROOM	BANQUET	RECEPTION
Sierra Room	200	100	120	200
Sierra 1	72	40	50	72
Sierra 2	72	40	50	72
McKinley Room	130	66	90	130
Shasta Room	128	70	90	130
Shasta 1	56	36	40	56
Shasta 2	40	24	40	40
Cascade Room	128	70	90	130
Cascade 1	40	24	40	40
Cascade 2	56	36	40	56
Teton Room	128	70	90	90
Teton 1	56	36	40	50
Teton 2	40	24	40	50
Ruby Room	128	70	90	90
Ruby 1	56	36	40	50
Ruby 2	40	24	40	50
The Boardroom	60	40	50	60

GSR Premier Meeting & Event Services



Event Planning and Execution Services

Our professional, seasoned and dedicated Event Services Team will consult and inspire you, coordinating every detail to provide the best in Grand Service you expect and deserve



Food and Beverage Planning

GSR offers a delicious and an inspiring array of options for you and your attendees' discerning palate. We can create dining experiences for every meal period and in between. Meals centered on a themed event or activity, can take your attendees experiences to even Grand level



Guest Room Block Reservations and Management

Our Event Services Team will work with you to ensure your attendees and guests are well recognized and taking care of. GSR offers the online tool Passkey. Passkey can be customized to include information specific to your meeting and event, with great post event reporting to help you reconcile your meeting.



Entertainment Coordination

GSR is more than a premier casino or resort meeting and event destination, we have big name concerts, unique shows and experiences that we can arrange group tickets for, or help you find that just right fit for your attendee's exceptional experience.



Event Technology & Audio Visual Services

The GSR was built to deliver the highest quality of experience you would want or need for your meeting and event. Light and Sound Production, Rigging, Video Conferencing, or just a mic and flip chart, we can meet your production and technology needs.



Fed Ex Meeting and Event Services

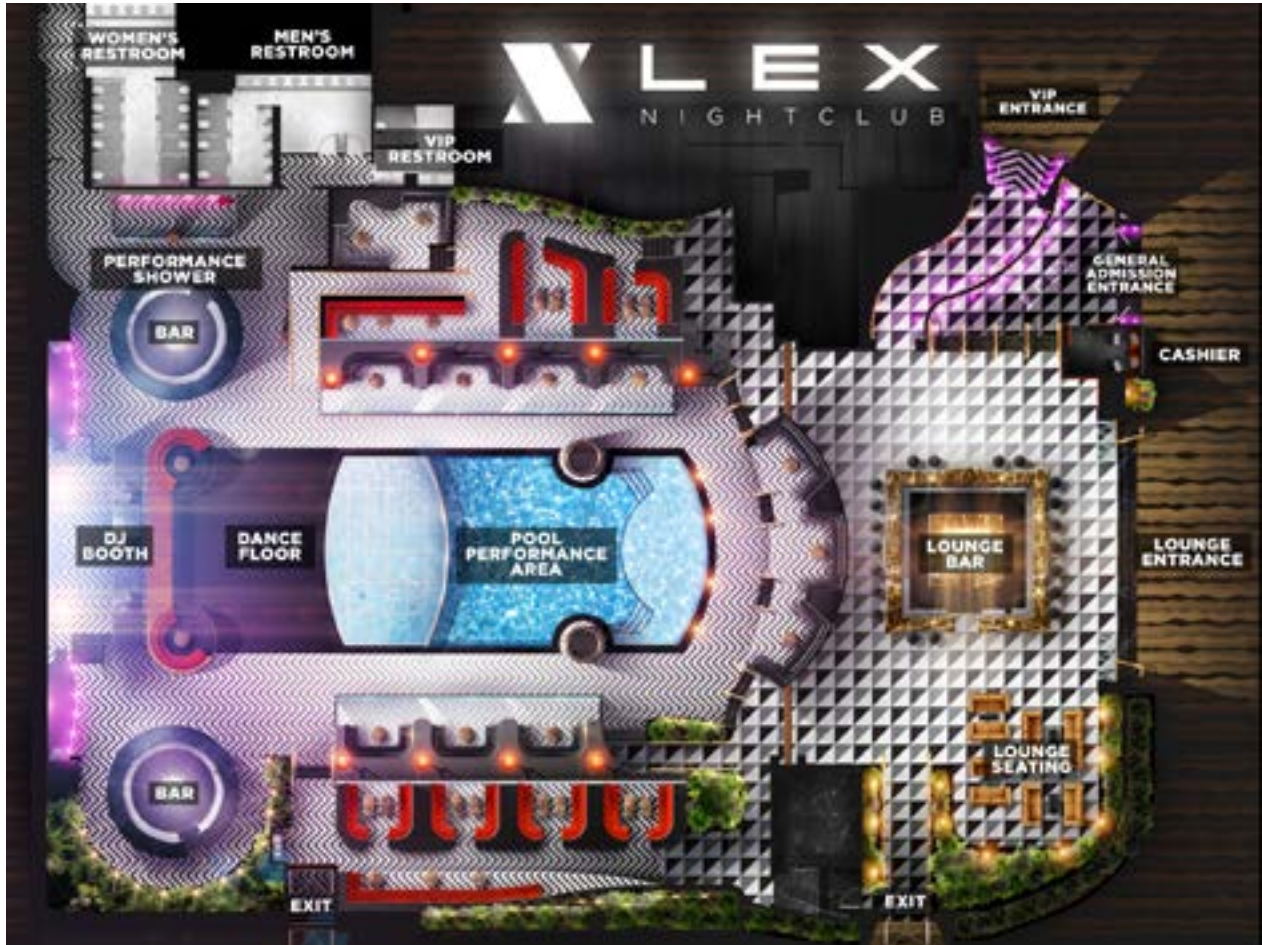
The Fed Ex Office Print and Ship Center offers you everything you need to support your meeting and event. Exhibit support and shipping, signage, banners, office supplies, copying and printing.



Team Building Programs

We have thought of everything you can do outside of the meeting room to make your GSR meeting and event attendee experience Grand.

Lex Nightclub



Room Capacities*

	NIGHTCLUB/LOUNGE	LOUNGE	NIGHTCLUB	DANCE FLOOR
LEX Nightclub - Standing	1200	400	800	
LEX Nightclub - Seated	35 Tables/218	6 Tables/24	29 Tables/194	9 Tables/90

* Capacity figures are subject to change, depending on space allocations for head table, dance floor, staging and catering requirements.

** Pillars may obstruct view in some configurations.

LEX Lounge Accommodates 400 people
 LEX Nightclub Accommodates 800 people

Grand Theatre



LIGHTING:

- 46 @ Robe Robin MMX
- 24 @ Mac Aura
- 16 @ Clay Paky Sharpy
- 20 Oracle LED Tri-PAR
- 16 Eurolight 430
- 3 color PAR stage wash from 4 positions above and side
- Grand MA 2 (@ audience mix position)
- Various front and special lighting

VIDEO:

- 2 @ 21 x 12 6mm video walls
- 1 @ 32 x 19 6mm video wall

AUDIO:

- F.O.H.**
- d&b J12 left and right line array P.A.
 - Yi 12 center fill cluster
 - 12 @ J12 subs
 - 30d amps
 - Midas PRO1 console F.O.H.
 - Yamaha PM5D F.O.H.
- MONITORS**
- 16 @ JBL bi-amped wedges
 - Crown Amps
 - Yamaha PM5D

PROSCENIUM STAGE:

- Power as needed left and right
- 110' wide x 80' deep
- Trim Height 35' ++

AUDIENCE CHAMBER:

- 2,638: Seated + seating in Orchestra pit
- 2,900 Seated + General Admission standing in Orchestra pit

Lex Nightclub & Grand Theatre

The Grand Theatre is the perfect location for a keynote address, general sessions, or that special product reveal. The Grand Theatre has a capacity of more than 2,700 and features luxury seating, exclusive VIP booths along with state-of-the-art lighting and sound systems.

LEX Nightclub is truly a unique event venue. The sleek sophisticated club is perfect for VIP receptions or private dinner parties. LEX can accommodate up to 1,200 for receptions and over 200 for seated events.

Suites are Grand.

Grand Sierra Resort offers your meeting attendees a wide variety of guest room choices. We offer nearly 2,000 spacious guest rooms and suites to choose from.

Summit Suites

For guests wishing to experience the highest level of accommodations and service in Reno, stay on one of our luxury Summit levels. Indulge yourself in designer custom furnishings, complete with a contemporary look and feel.

These accommodations are so luxurious guests may never want to leave.

- Butler pantry with coffee maker and mini refrigerator
- Spa inspired shower with mosaic tile floor
- Flat screen televisions and WiFi*
- Custom Italian leather furniture
- Bottled water refreshed in-room daily
- In-room safe

*Guests will enjoy our advanced wireless technology which will provide highly secure and reliable wireless connections. All guest floors will have Cisco 2702: access points which will support the latest 802.11ac standard for WiFi.



Summit Diplomat Suite



Summit Chairman Suite



Summit Ambassador Suite



Summit Presidential Suite



Grand Executive Suite at The A

The A Suites. A new standard.

An ideal getaway for the business traveler, this bright and stylish suite offers the convenience of the office with the comforts of home – plus a few added luxuries! Your dedicated lounge area with writing desk provides the space you need to unwind, catch up on a few emails, or prepare for that conference.

The A Suites

- Serta Perfect Sleeper mattress(es)
- Sobella bed linens
- Sobella pillows and towels
- up to 791 square feet* of space
- City, pool, Sierra, or valley view
- Wi-Fi
- Radio alarm clock and telephone with voice mail
- 55" flat-screen TV with premium networks and pay-per-view
- 2 side chairs and ottoman (King room); 1 side chair (Queen room)
- Writing table and chair
- Beverage Cooler
- Coffee and coffee maker
- Marble, spa-inspired shower
- Hair Dryer, vanity mirror, iron and ironing board
- Closet with door and in-room safe
- Smoke-free environment

*Guests will enjoy our advanced wireless technology which will provide highly secure and reliable wireless connections. All guest floors will have Cisco 2702: access points which will support the latest 802.11ac standard for WiFi.



Director Suite at The A



Grand Deluxe King at The A



Grand Studio Suite at The A

Dine Grand



Reno's only celebrity chef-owned restaurant. Reservations recommended.



Explore hand-tossed pizzas, hand-shaken cocktails, and an innovative menu.



A Pan-Asian bistro. Enjoy an all you can eat sushi bar.



Featuring a spectacular array of foods! Serving breakfast, lunch, dinner, and brunch on weekends.



Authentic street tacos, spirits, and a contemporary Mexican menu.



Join us at the 24-hour Grand Café serving breakfast, lunch, and dinner.



88 wines by the glass, sample flights, and a delicious small plate menu.



Open 24 hours. Baked goods, sandwiches, desserts, snacks, and beverages.



Famous for our hamburgers and shakes



Fresh hot & cold sandwiches, salads and desserts



Pizzas, salads, and more.



Your favorite specialty coffee house.

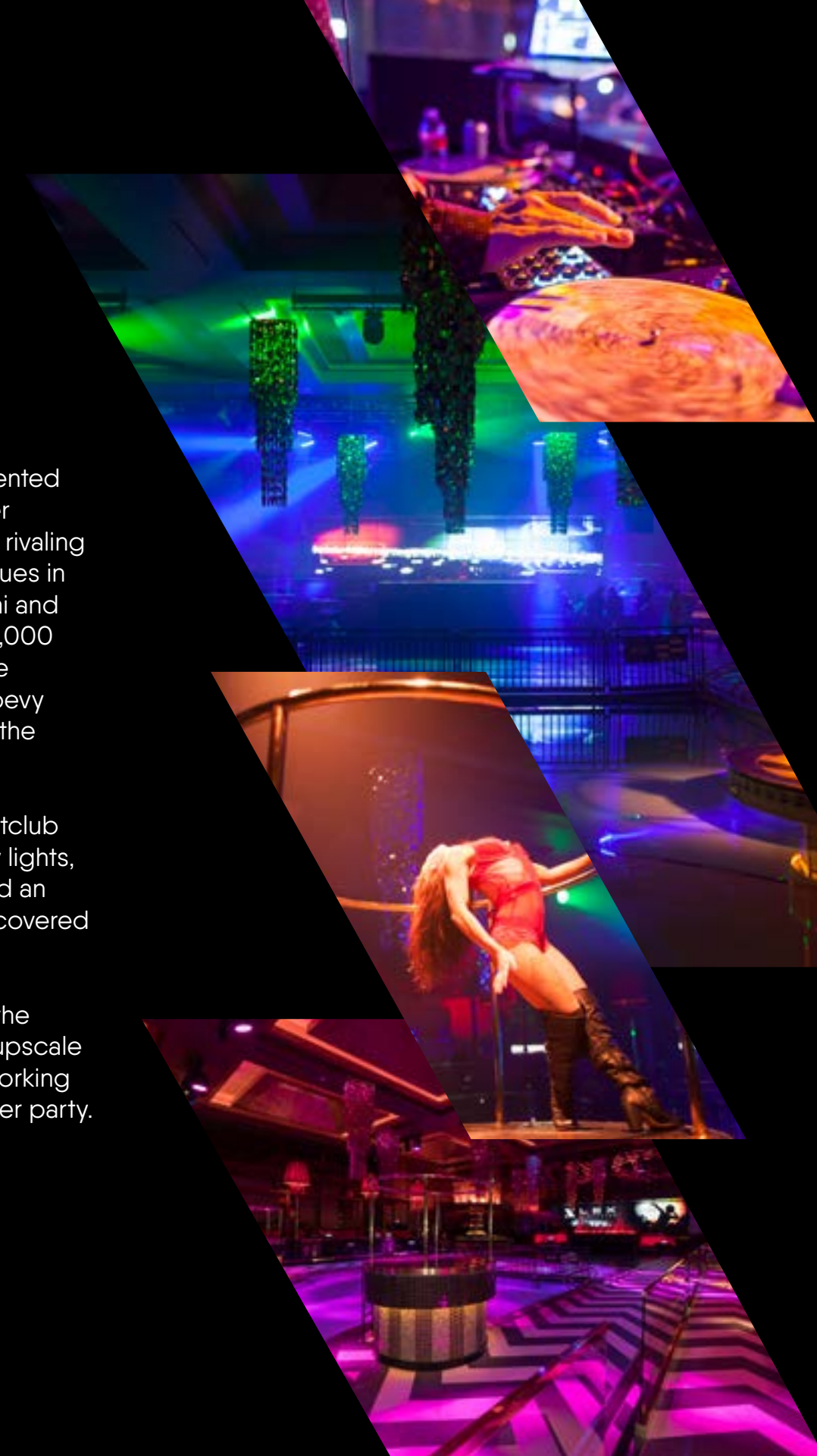


LEX
NIGHTCLUB

LEX Nightclub - an unprecedented nightlife venue - is the premier nightclub in Northern Nevada, rivaling the country's top nightlife venues in Las Vegas, Los Angeles, Miami and New York. At an impressive 25,000 square feet, LEX features three full bars, 33 VIP tables and a bevy of deluxe amenities to create the experience of a lifetime.

The more than \$16 million nightclub also features nine intricate sky lights, a \$2 million lighting system and an indoor water feature partially covered by a glass dance floor.

More than a nightclub, LEX is the perfect place for an elegant upscale VIP reception, a sales or networking event or a unique private dinner party.



Resort Activities

Bowling

Grand Sierra Resort can make your stay even more fun with our 24-hour 50-lane Bowling Center. Located on the main floor of the resort, guests can enjoy bowling on quality lanes with electronic scorecards. We also have a snack shop and lounge for everyone to enjoy.

FunQuest

- Over 40,000 sq ft of games and attractions
- Battlefield Live Ultimate Combat Game
- 9,000 sq ft Laser Tag arena
- Bumper Cars

Grand Adventure Land

- Ultimate Rush - Combines skydiving & hang-gliding
- Racing Oval - Our fastest track
- Road Course - High banked turns and exciting races
- Slick Track - Our Drift Track

Grand Cinema

Grand Sierra Cinema features a mix of Hollywood hits and independent art films. The movie theater boasts a full-service snack bar and comfortable seating.

Grand Bay Aqua Golf Driving Range

Work on your golf game without leaving the hotel thanks to Grand Bay Aqua Golf Driving Range.

Max Action & Axe Throwing

This exciting attraction includes Axe Throwing, X-D Theater, Zero Latency Free Roaming VR. Explore different games, challenges and worlds. Here we make it all possible, there is something for everyone in the group.

Escape Room

Breakthrough is an escape game designed for 3-6 people. This brain teasing game is full of challenges. Every corner, every wall, every drawer contains hints and clues that will help you escape...and you have 60 minutes to figure it out.

Shopping

With a variety of unique boutiques, gift shops and candy store, Grand Sierra Resort is the perfect place to shop or treat yourself to a little indulgence.

Let Us Plan Your Team Building Experience.



Grand Bay Aqua Golf Driving Range



Bowling



Grand Adventure Land



Fun Quest



You'll Actually Need To Spend Some Time, Ya Know, Meeting.

Relax Grand.

The Spa at Grand Sierra helps you live life in balance. The Spa offers a complete range of facials & body treatments, steams, saunas, whirlpools and lounges. A full service hair and nail salon, retail boutique, couple's treatments and an indoor coed spa pool.

The Spa fitness center is open 24 hours with room key access.

The Pool The Pool is your ultimate destination to escape, unwind and delight in the outdoors all year round! With a stunning resort-sized pool, three levels of decks and full-service outdoor bar, this amenity is well equipped for those long, lazy summer days. Even in winter, The Pool is decked out with hot tubs and fire pits and nothing says relaxation like kicking back in a hot tub with a hot drink, s'mores and friends.





Lake Tahoe



Truckee River Whitewater Park



Riverwalk District



Riverwalk



West Street Market



Artown



Lakeridge Golf Course



Greater Nevada Field

Reno-Tahoe is Grand.

Located in the heart of Reno-Tahoe, Grand Sierra Resort is the perfect location for your meeting attendees to get unconventional. We're just minutes from the downtown Reno Riverwalk and Midtown Districts with a unique whitewater kayak park and distinctive shopping and dining. Also located in the downtown area is; the Nevada Museum of Art, the Greater Nevada Field with Reno Aces Triple-A baseball and Reno's new USL soccer team Reno 1868 FC, the National Automobile Museum and the Freight House district.

But that's not all...the Reno-Tahoe region is a mecca for outdoor sports like skiing, golf, hiking, fishing and mountain biking. There are over 50 golf courses within 90 minutes, and a few as close as 15 minutes from the resort. Lake Tahoe is just 45 minutes away with year round breath taking scenery and 15 ski resorts with some of the best skiing in North America.

We take
“Business as usual”
and launch it
off a cliff





Reno-Tahoe Airport doesn't get any closer

With eight airlines offering more than 100 non-stop flights to Reno each day, ease of travel is just another in the list of reasons why **Grand Sierra Resort** should be your number one convention destination.

Grand Sierra Resort also offers **complimentary airport shuttle service**.



Non-Stop Flights

ATLANTA, GA
Delta

BOISE, ID
Alaska

BURBANK, CA
JSX

CHICAGO (MIDWAY), IL
Southwest

CHICAGO (O'HARE), IL
American

DALLAS/ FT. WORTH, TX
American

DENVER, CO
Southwest
United

GUADALAJARA, MEX
Volaris

HOUSTON, TX
United

LAS VEGAS, NV
Allegiant
Southwest

LONG BEACH, CA
Jetblue (Seasonal)

LOS ANGELES, CA

American
Southwest
United

MINNEAPOLIS, MN
Delta (Seasonal)

NEW YORK (JFK), NY
Jetblue

OAKLAND, CA
Southwest

ORANGE COUNTY, CA
Alaska

PHOENIX, AZ
American
Southwest

PORTLAND, OR
Alaska

SAN FRANCISCO, CA
United

SAN DIEGO, CA
Southwest

SAN JOSE, CA
Alaska

SALT LAKE CITY, UT
Delta

SEATTLE, WA
Alaska

One-Stop Flights

ALBUQUERQUE, NM

American
Delta
Southwest
United

BALTIMORE, MD

American
Delta
Southwest
United

BOSTON, MA

Alaska
American
Delta
United

CHARLOTTE, NC

American
Delta
Southwest
United

CINCINNATI, OH

American
Delta
United

DETROIT, MI

American
Delta
Southwest
United

INDIANAPOLIS, MN

American
Delta
Southwest
United

LOUISVILLE, KY

American
Delta
Southwest
United

MIAMI, FL

American
Delta
Southwest
United

MILWAUKEE, WI

American
Delta
Southwest
United

NASHVILLE, TN

American
Delta
Southwest
United

NEW ORLEANS, LA

American
Delta
Southwest
United

NEW YORK (JFK), NY

Alaska
American
Delta

NEW YORK (EWR), NY

American
Delta
Southwest
United

NEW YORK (LGA), NY

American
Delta
Southwest
United

OMAHA, NE

American
Delta
Southwest
United

ORLANDO, FL

Alaska
American
Delta
Southwest
United

PHILADELPHIA, PA

Alaska
American
Delta
Southwest
United

ST. LOUIS, MO

American
Delta
Southwest
United

TORONTO, CANADA

American
Delta
Southwest
United

WASHINGTON (IAD), D.C.

Delta
Southwest
United

WASHINGTON (DCA), D.C.

Alaska
American
Delta
Southwest
United

*For more one-stop options, please contact your preferred airline provider.

HOW TO REACH US

Meeting and Event Sales: (866) 473-6672

Catering and Wedding: (775) 789-2095

Event Services: (775) 789-2099

Audio, Visual, & Event Production: (775) 789-1605

Business Center: (775) 789-2478

Sales@GrandSierraResort.com



2500 East Second Street | Reno, Nevada 89595

www.GrandSierraResort.com



2500 East Second Street | Reno, Nevada 89595 | GrandSierraResort.com